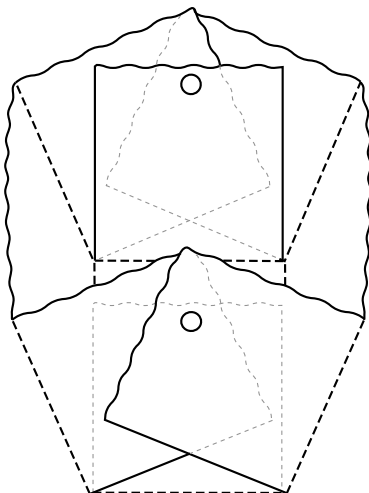
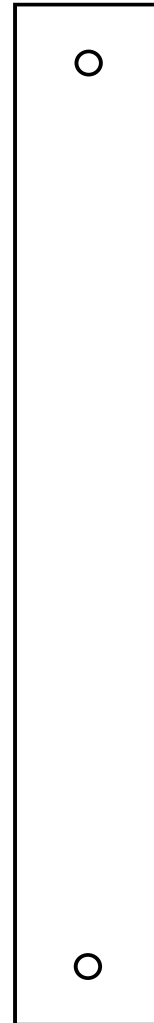
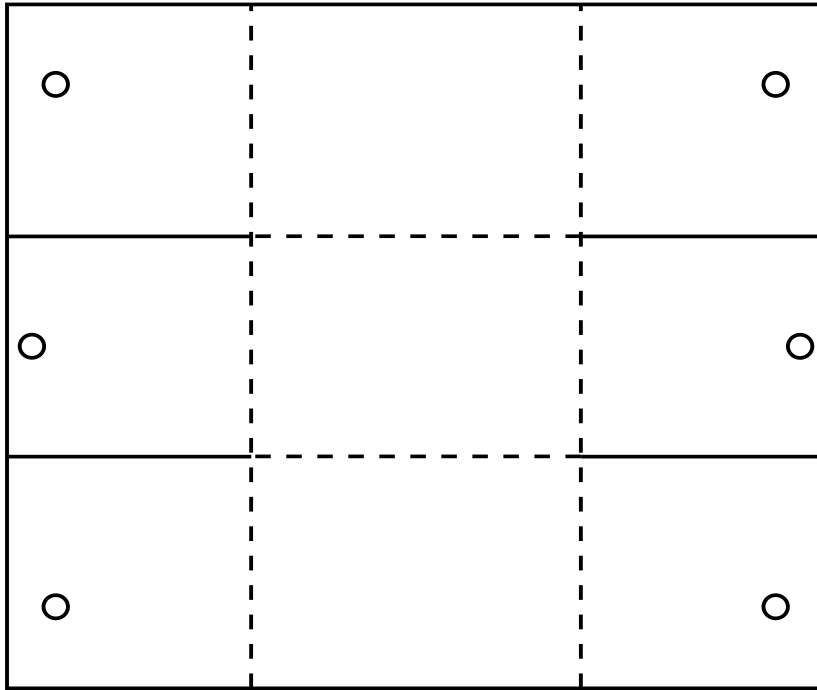


Pattern Packet



1. Transfer the pattern pieces to stiff cardstock and cut along solid lines. Use decorative-edge scissors on the outside edges for a fancier look. Score for folding along the dotted lines.
2. Adhere a band of ribbon to the outer sides of the basket, securing the ends on the inside. Punch $\frac{1}{4}$ " holes in the panels and the handle where indicated. Fold the sides of the basket up, making sure the middle tab is on the inside and the holes are aligned (see the diagram). Line up the holes with the holes in the handle and secure with large brads.
3. Make ribbon bows and adhere them to each side.