



Slate Coffee Sleeve

TOOLS

scissors
sewing needle needle
printable coffee sleeve pattern
pliers if you'd like

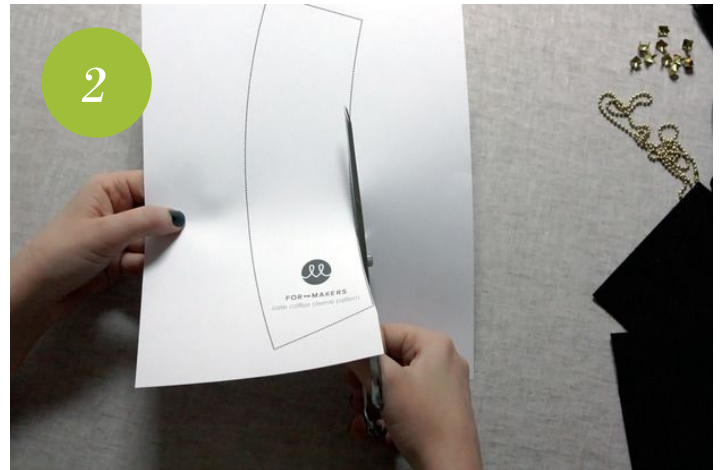
MATERIALS

slate black felt
midnight black thread
gold pyramid studs
brass ball chain



1

Gather your tools and materials. You'll need to gather scissors, the larger sewing needle, pliers, tape, and print the tutorial.



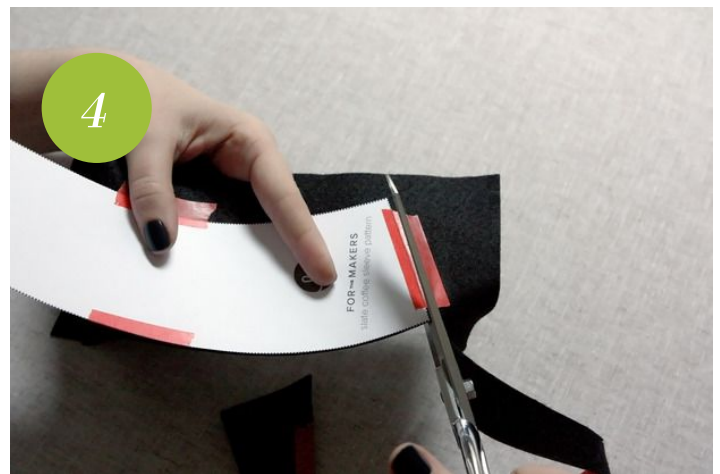
2

Cut around the exterior of the printed pattern.



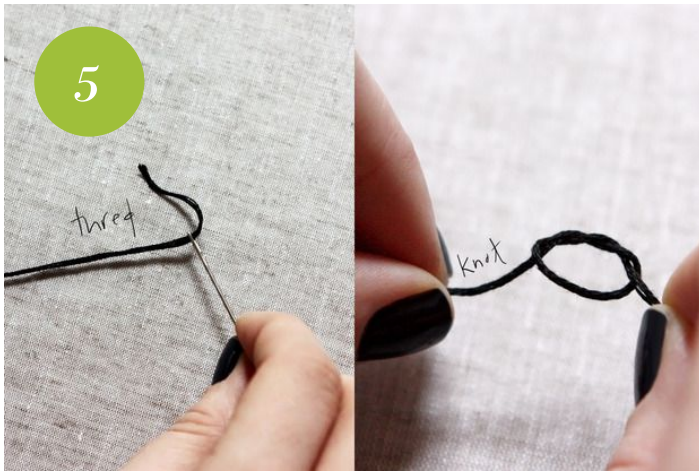
3

Tape it to the felt to secure it while you cut the felt.



4

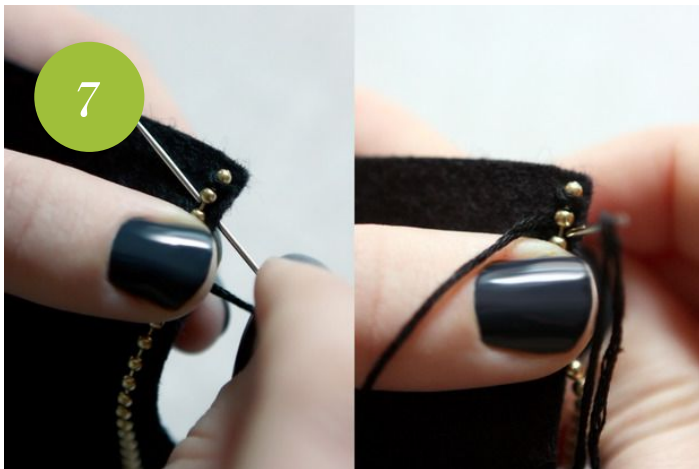
Cut the felt along the edge of the pattern.



5
Cut about yard of the black embroidery thread. Thread your needle and double knot the thread at the very end.



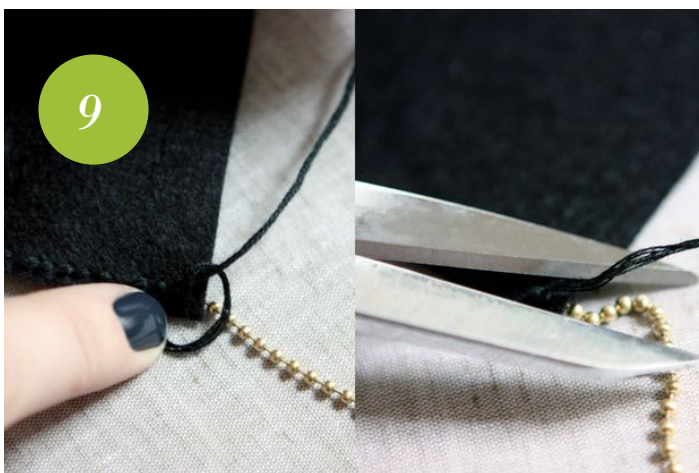
6
First you'll stitch the ball chain to the felt with small whip stitches. Begin on the top lefthand corner.



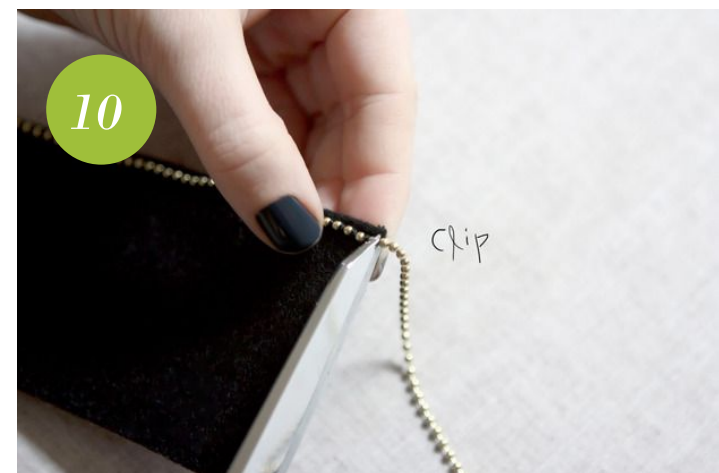
7
Hold the felt and chain in one hand and stitch them together with the other. We used small stitches and stitched from right to left.



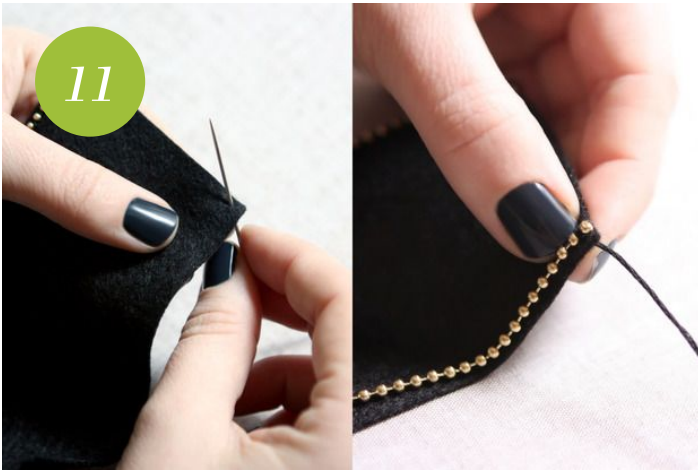
8
Stitch until you reach the end of the felt.



9
Once you've reached the end of the top side flip the coffee sleeve over, knot the thread, and snip it.



10
Clip off the excess ball chain with scissors or jewelry clippers. (Make sure their old scissors!)



11
Cut a second yard of thread. Thread the needle, knot the thread, and begin stitching the ball chain to the bottom of the felt sleeve. Use the same small stitches that you used for the top.



12
When you've reached the end of the felt knot and snip the thread on the back of the felt. Flip the felt over and clip the ball chain.



13
Now that you've finished stitching the ball chain to the felt line up the two short ends. You'll stitch this together next to create the seam.



14
Cut a third length of thread. Thread your needle and knot the thread.



15
Holding the felt in one hand stitch the ends together using short stitches.



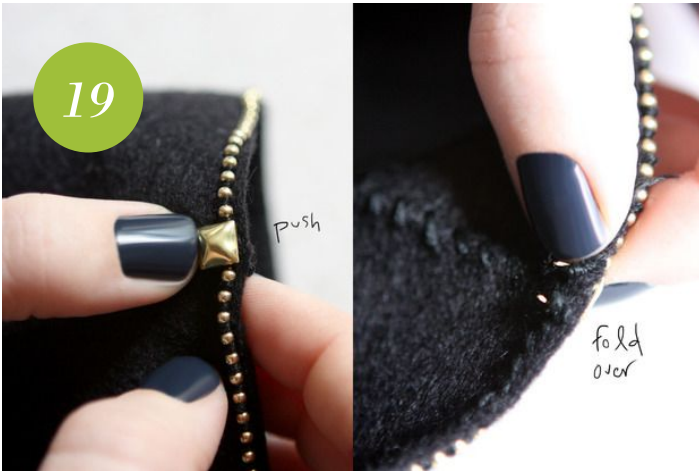
16
Stitch away! Use small, even stitches but don't be overly concerned making them perfect as you'll cover them with studs in the next step.



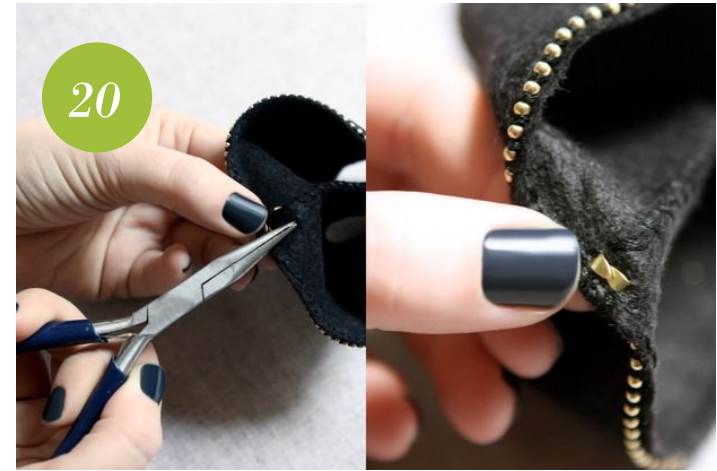
17 Continue stitching until you reach the end of the felt.



18 Knot the thread and snip the excess.



19 Line up the first stud with the edge of the felt. Push the prongs through the felt and fold them over each other on the interior of the sleeve.



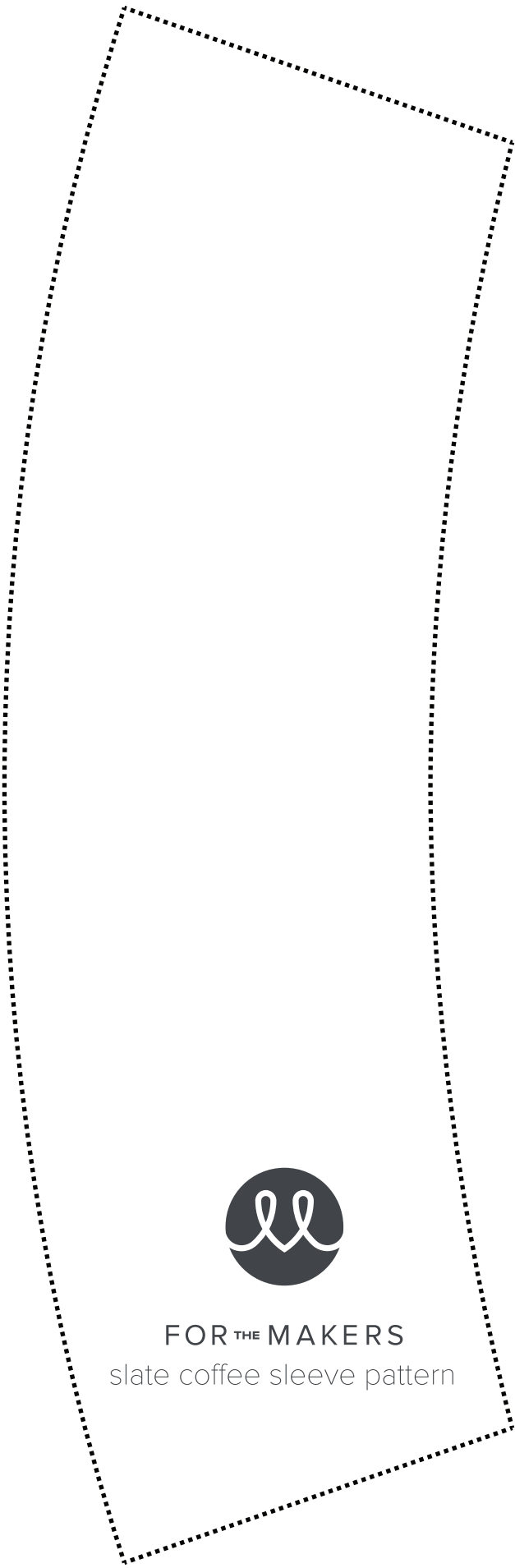
20 You may want to use pliers to fold over the prongs.



21 Continue adding studs along the seam until you've reached the end.



22 Sip away!



FOR^{THE} MAKERS

slate coffee sleeve pattern