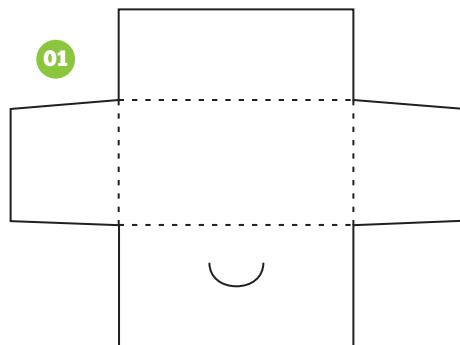


Mini Envelope: Measures 4.75" wide by 2.5" high

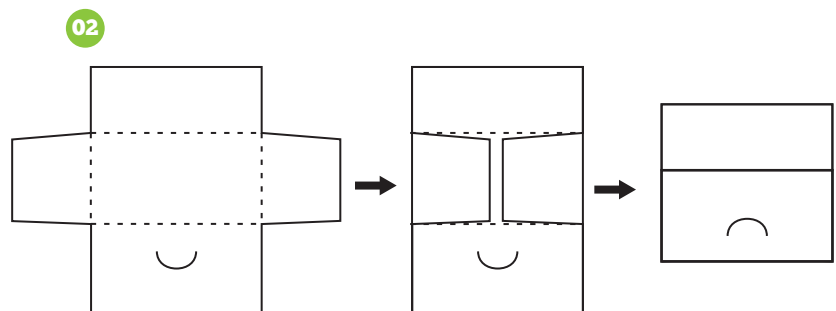
Printing:

1. Print the template on one side of the paper you're using.
3. Cut and assemble, as shown below!

Assembly:

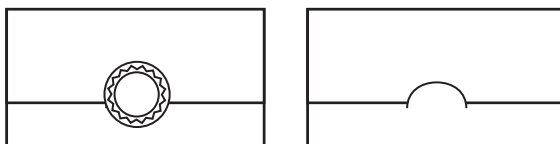


1. Score where dashed lines are shown, cut along solid lines (this includes the semi-circle shown on the template).



2. Fold the left and right flaps toward the center, then fold the bottom flap up, and tuck the top flap into the semi-circle flap you created by cutting.

03



3. Affix a decorative seal or leave as is and give to that special person!

